

BIZCOVERY FOUNDATION

- End-to-end Analytic Application Platform

◆ ETL ◆ Data Warehouse ◆ Data Mart ◆ Integrated OLAP ◆ Reporting



Convert Digital Data into Digital Capital



Bizcovery Software, Inc.

www.bizcoverysoftware.com

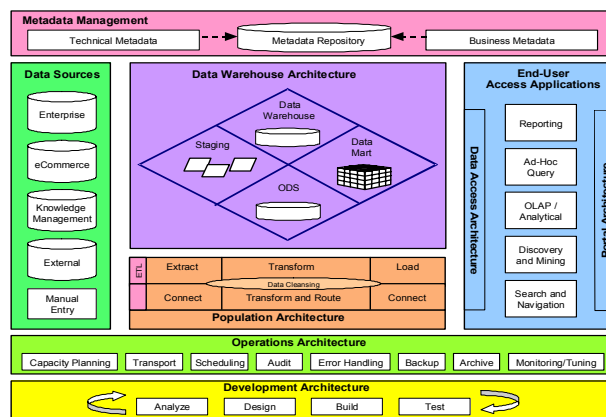
An All-in-one Platform

Bizcovery Foundation is a robust ETL, data warehouse / data mart and analytic application platform. Applications built on Foundation can include the adapters (ETL layer), data store, application server, and the integrated management environment.

In today's increasingly competitive environment, businesses require analysis to provide comprehensive understanding of their business by gathering and consolidating data from multiple OLTP application systems and take actions. Bizcovery Analytic Application platform provides the infrastructure to implement solutions that address such requirements.

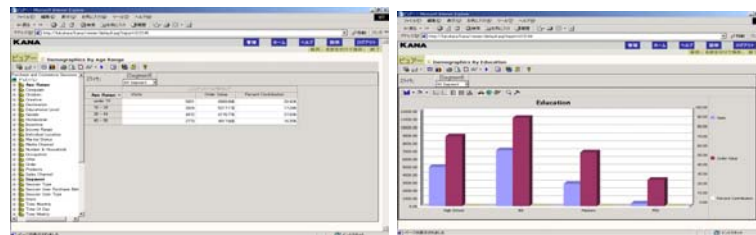
1. Data Consolidation: The ETL Layer

Bizcovery Foundation features an adaptive layer for robust data extraction, transformation and load, or ETL, capabilities, including data cleansing and data mapping. Through the robust connectivity layer, adapters to e-business, financial and customer data may be "melded" to achieve a complete business view of an entire enterprise.



2. Data Storage: Powerful Data Mart and Data Warehouse Engine

The Bizcovery data store is optimized for analysis. It is a completely open solution, SQL 92 compliant, and supports any database that supports an ODBC connection, JDBC connection, Oracle OCI, Java, etc. Bizcovery supports distributed computing by allowing different analytic applications or application platform components to be distributed to different servers in different physical locations. It uses column-store technique to compress data and to reduce the space needed to store data. With reduced I/O and using bit-map indexing technique, it dramatically reduces the time needed to answer business questions.



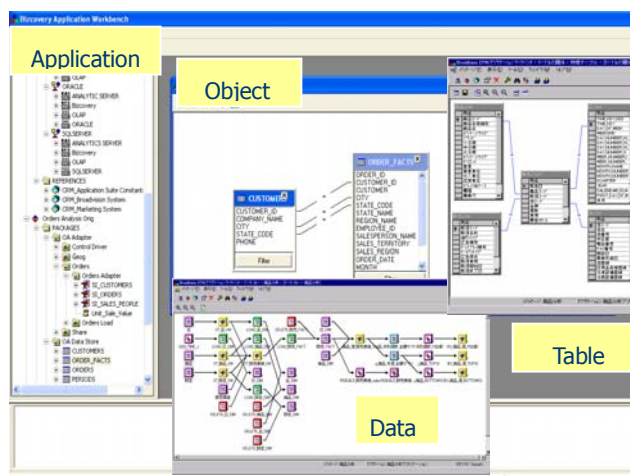
3. Data Presentation: The Report Portal

The easy-to-learn and easy-to-use browser-based interface enables business users

and decision makers throughout an organization to take full advantage of Bizcovery from their desktop with minimal training. Bizcovery's web-based interface guides business users through the e-business analysis process, while allowing advanced users access to a more robust interface and functionality.

4. Integrated Graphical Application Management.

Bizcovery's integrated graphical application management environment saves administrators and developers time and aggravation associated with managing and manipulating multiple application management tools. The Bizcovery integrated management environment seamlessly combines graphical development, data management, and administration to yield a complete platform in which to modify, deploy, and maintain the Bizcovery analytic applications.



1. All in one

Bizcovery's open technology and end-to-end approach ensure rapid deployment and easy ongoing maintenance. As a result, business managers may concentrate on business results, not technical integration. Bizcovery provides the platform required for complete analytic applications:

2. Short Time to Market

Building and modifications to application running on Bizcovery are dramatically easier than those running on any other platforms on the market today. Unlike many products, the Bizcovery solution can be deployed in the shortest time possible.

3. Fast Time to Report and Time to Discover

Bizcovery's powerful ETL and data warehouse engines allow fast consolidation of OL data. It uses techniques to reduce I/O and fast data storage/retrieval. Bizcovery dramatically reduces the time needed to convert raw data into analyzable form.

4. Low Total Cost of Ownership

Bizcovery is easy to learn and easy to use. The time needed to build and modify an application running on Bizcovery is much shorter. The overall resources required for owning a Bizcovery application is much less than other offerings in the market. With affordable pricing and resource requirement, it lowers the TCO.

5. High Return on Investment

Bizcovery provides end-to-end analytic platform. It allows fast time to market. It shortens the time to discover. It lowers TCO. The ROI is much higher than other offerings in the market.

1. Best Analytic Application Engine

Bizcovery offers the best analytic application engine. From data extraction, data consolidation, data storage, and to data discovery, Bizcovery provides all the components required for building and running an analytic application.

2. Easy-to-learn and Easy-to-use

Bizcovery application development platform (Workbench) allows developer to visualize the application development. It is easy to learn. The application developed on Bizcovery is easy to maintain. Using Bizcovery reduces the cost associated with the resources required to develop, maintain, and extend an analytic application.

3. Team Work, Concurrent Development, and Incremental Delivery

Bizcovery Workbench is designed to reduce the effort to build a complex analytic application. It facilitates the team work and concurrent development. It has the version control mechanism for better managing different versions of the same application. With incremental development and deliveries, it helps to narrow the gap between technical deliveries and business requirements.

4. Integrated ETL and Data Warehouse / Data Mart Engine

Bizcovery Foundation is an integrated ETL and data warehouse/mart engine. It reduces the development effort and the runtime cost by eliminating unnecessary data I/O.

5. Extensible

Bizcovery's visual environment is built on top of a very rich metadata layer. It allows real-time debugging by sampling data at any point in an analytic application. It is very easy to adjust the application due to changes in business requirement or IT environment.

Stay Competitive
with Bizcovery





Bizcovery Software Inc. is a leading provider of business intelligence and analytic application platform.

Using Bizcovery products, companies can

- Implement complete BI / Analytic applications in the shortest time possible.
- Integrate enterprise data from multiple systems and have the data ready for analysis within the time window.
- Adjust the applications to changing business requirements and changing IT environment.
- Afford the resources and money required to implement a comprehensive BI / Analytic application.

Today, both traditional "bricks and mortar" companies and companies doing business online are using Bizcovery's software to increase profitability, productivity, and customer value.

Bizcovery Software, Inc.

1121 Bedford Street
Fremont, CA 94539, U.S.A.
Tel: +1-510-579-5903
Fax: +1-702-554-8891
www.bizcoverysoftware.com
info@bizcoverysoftware.com

Bizcovery Software Japan, Inc.

Tamaya Bldg. 4F, 1-14-12,
Shinjyuku, Shinjyuku-ku,
Tokyo, 160-0022 Japan
Tel: +81-728-50-3209
jp@bizcoverysoftware.com

China:

Tel: +86-21-63284172
Fax: +86-21-63282791
cn@bizcoverysoftware.com

Bizcovery Software Taiwan:

No. 482, 14F-3, Sec. 5, Jhong-Siao
E. Road,
Taipei, Taiwan 10085
Tel: +886-2-2346-4633
tw@bizcoverysoftware.com